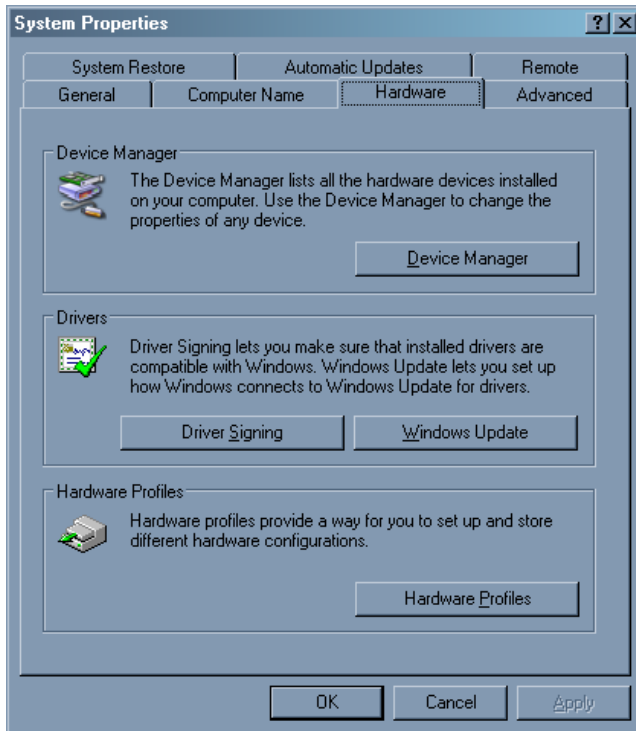


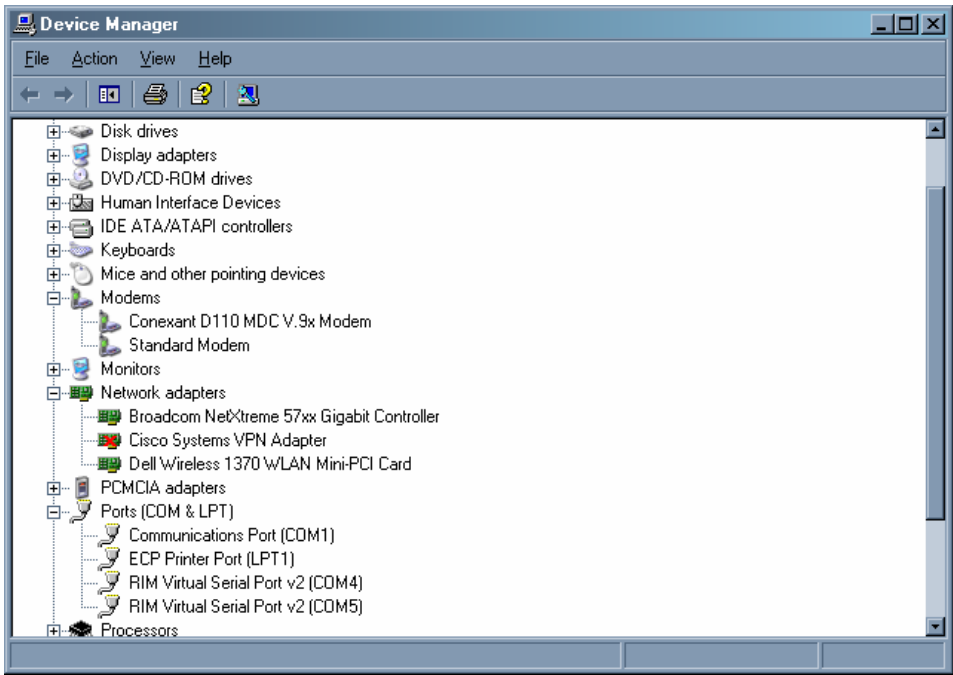
Using Windows XP SP2 Blackberry Curve 8310

Connect the curve 8310 using the USB port to your computer. Make sure the blackberry desktop manager software is open.

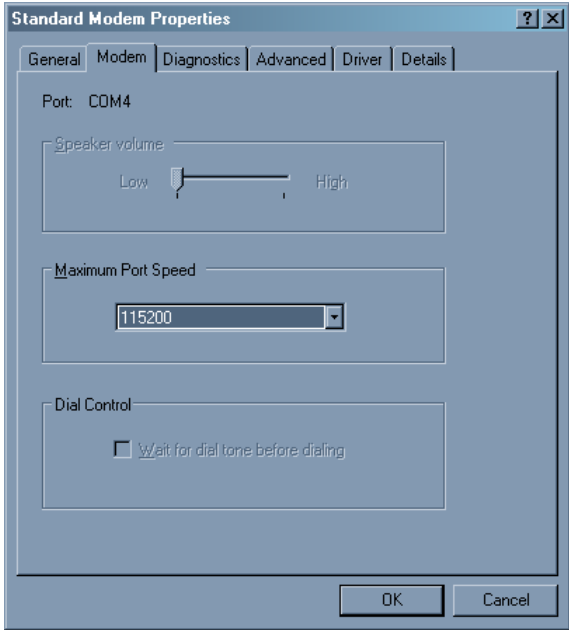
Go to Control_Panel->System->Hardware



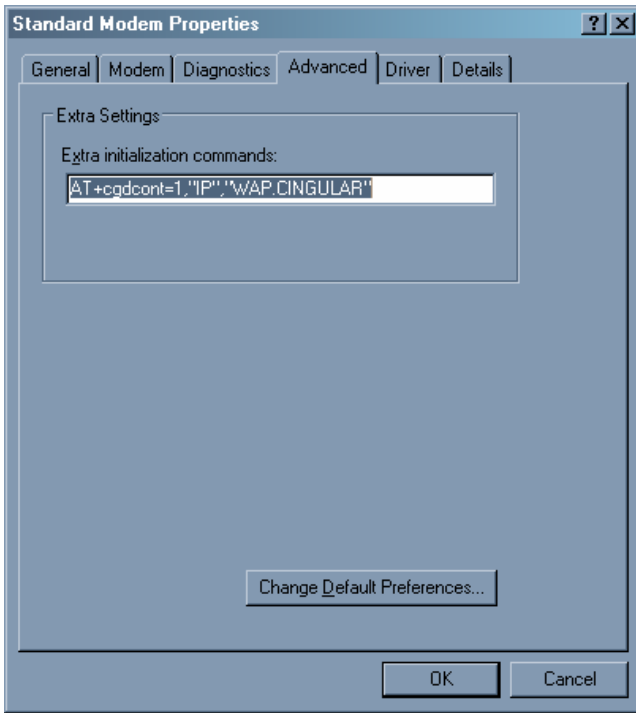
Click on Device Manager. You should see that a “Standard Modem” exists in the Modem tab, and also note that RIM is mentioned in the Ports.



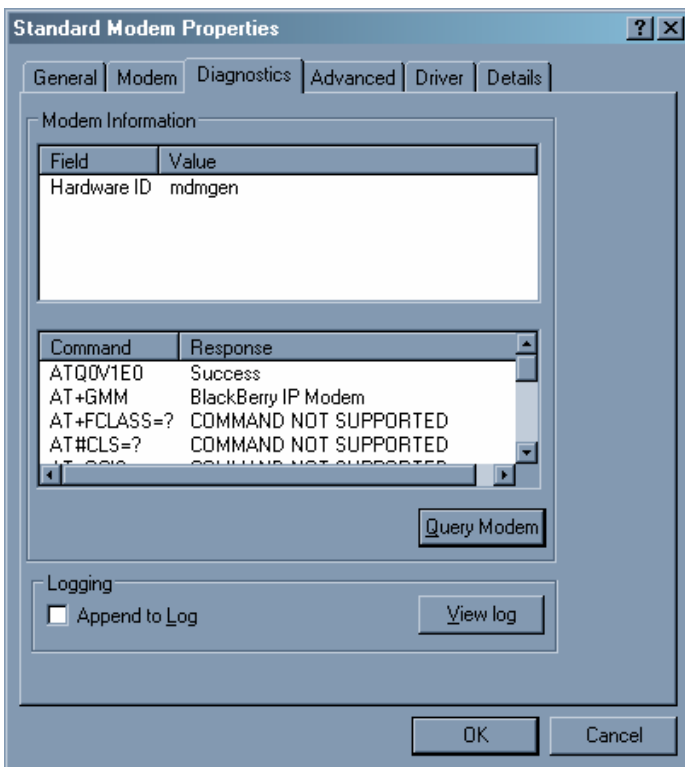
Right click on Standard Modem and go to Properties



For AT&T, paste the following into the Extra Settings Window

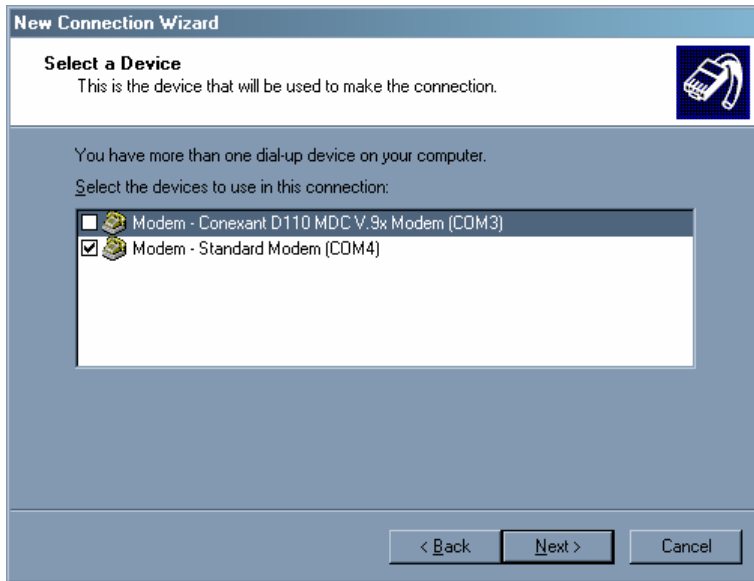


Click on Diagnostics and press "Query Modem" and you should get the following

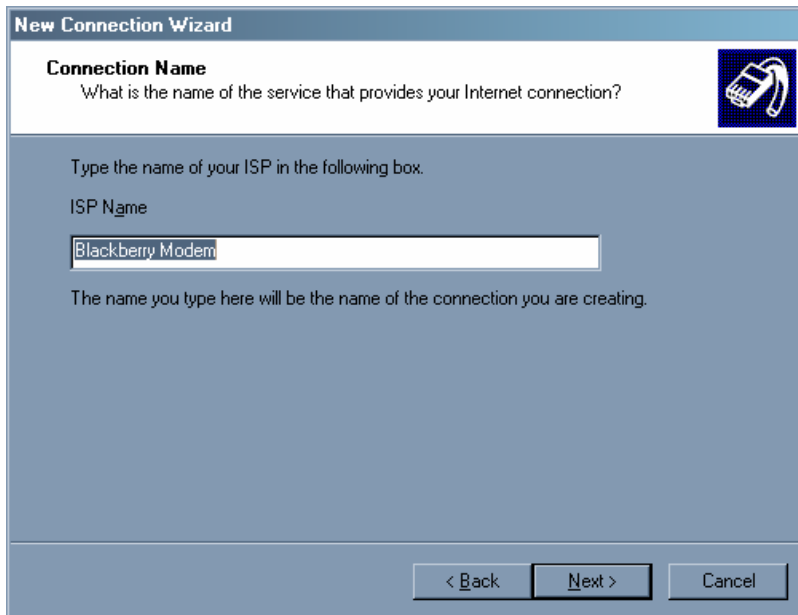


Press OK. Now go to your Network Settings and Choose the New Connection Button. Click on “Connect to the Internet”/”Set my Connection Manually”/”Connect Using a Dial-up Modem”

Make sure you check “Standard Modem” and uncheck the other modems, if any.




Give a good name to your connection.



For AT&T, Choose the phone number *99#

New Connection Wizard

Phone Number to Dial
What is your ISP's phone number?



Type the phone number below.

Phone number:
*99#


You might need to include a "1" or the area code, or both. If you are not sure you need the extra numbers, dial the phone number on your telephone. If you hear a modem sound, the number dialed is correct.

< Back Next > Cancel

Click next, click on making this connection for Anyones use. And then leave the username/password blank. Make sure you don't choose this as the default internet connection, unless you really want to

New Connection Wizard

Internet Account Information
You will need an account name and password to sign in to your Internet account.



Type an ISP account name and password, then write down this information and store it in a safe place. (If you have forgotten an existing account name or password, contact your ISP.)

User name:

Password:

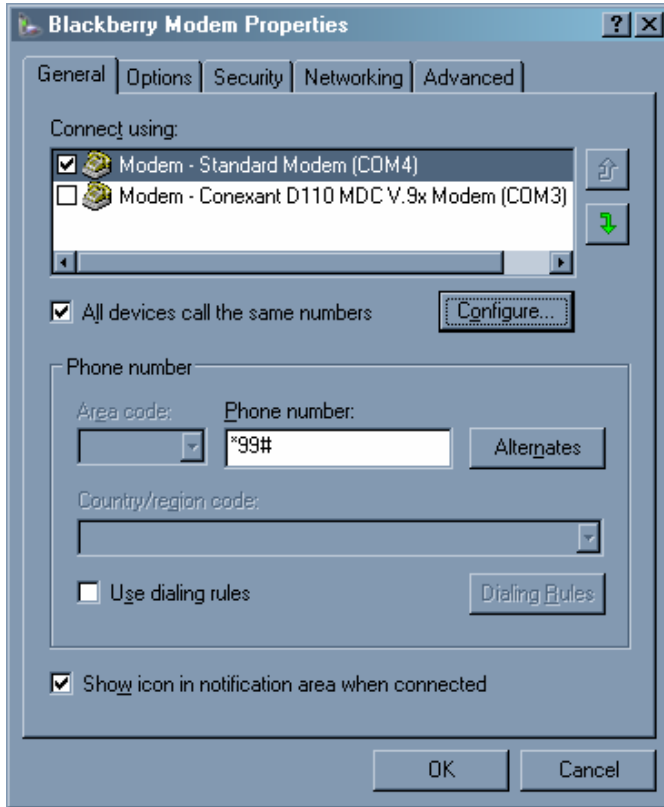
Confirm password:

Use this account name and password when anyone connects to the Internet from this computer

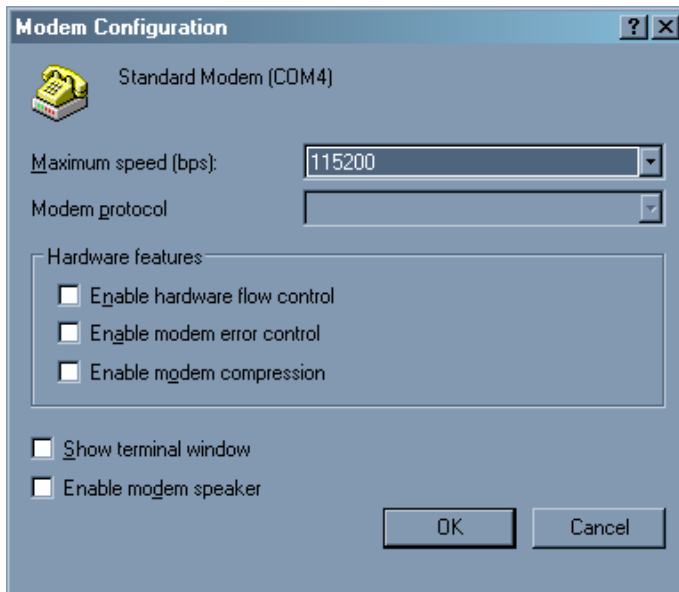
Make this the default Internet connection

< Back Next > Cancel

Click next and Finish. Now go back you your connection, and right click on it and choose properties.

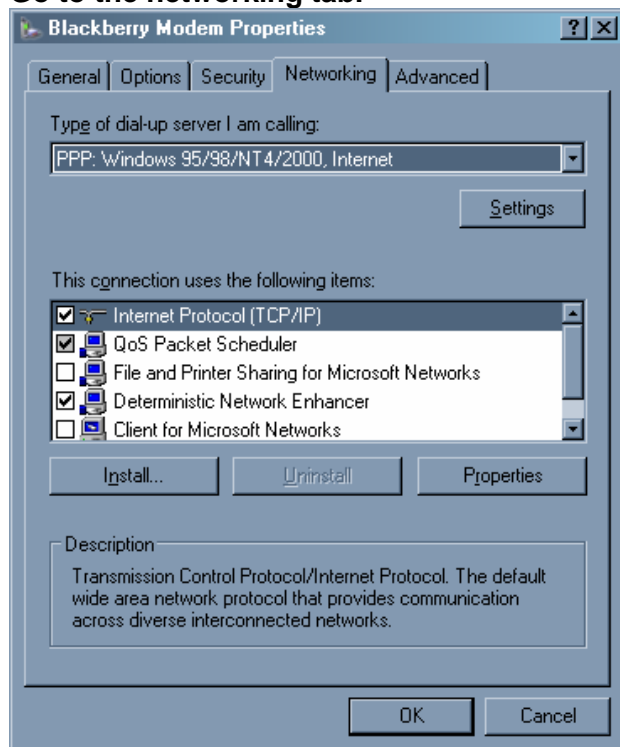


Click on Configure with the “Modem – Standard Modem” selected.

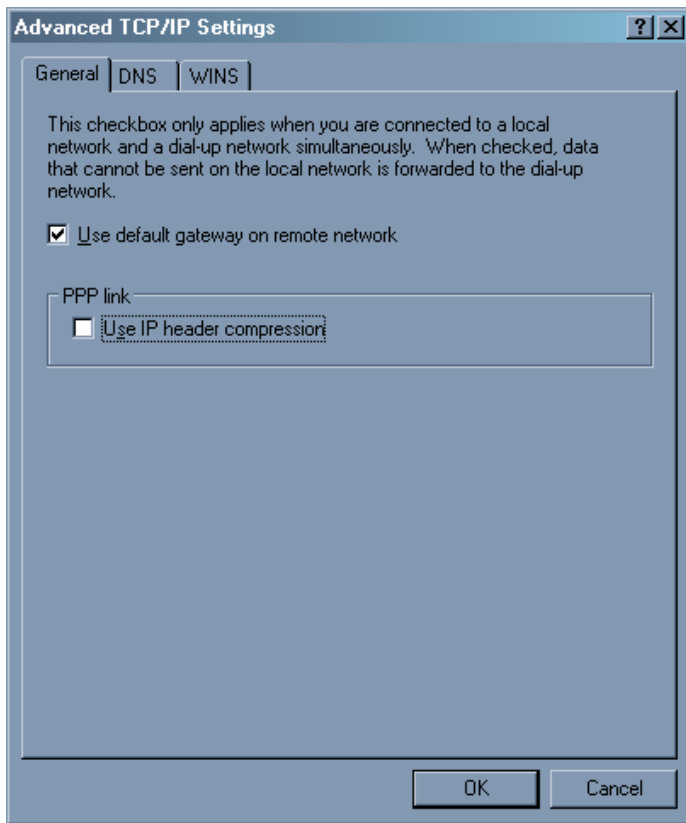


**Uncheck all 3 boxes (Enable hardware flow control/Enable modem error control/Enable modem compression). By default, I have hardware flow control enabled and had to uncheck it.
Click OK**

Go to the networking tab.



Highlight “Internet Protocol” and make sure “Use IP Header Compression” Is unchecked.



Now you are ready. If you are using another internet connection, unplug your network or disable your wireless connection.

Double-click your modem connection and click Dial. It should work, and it should say that your connection is 115200 bps.